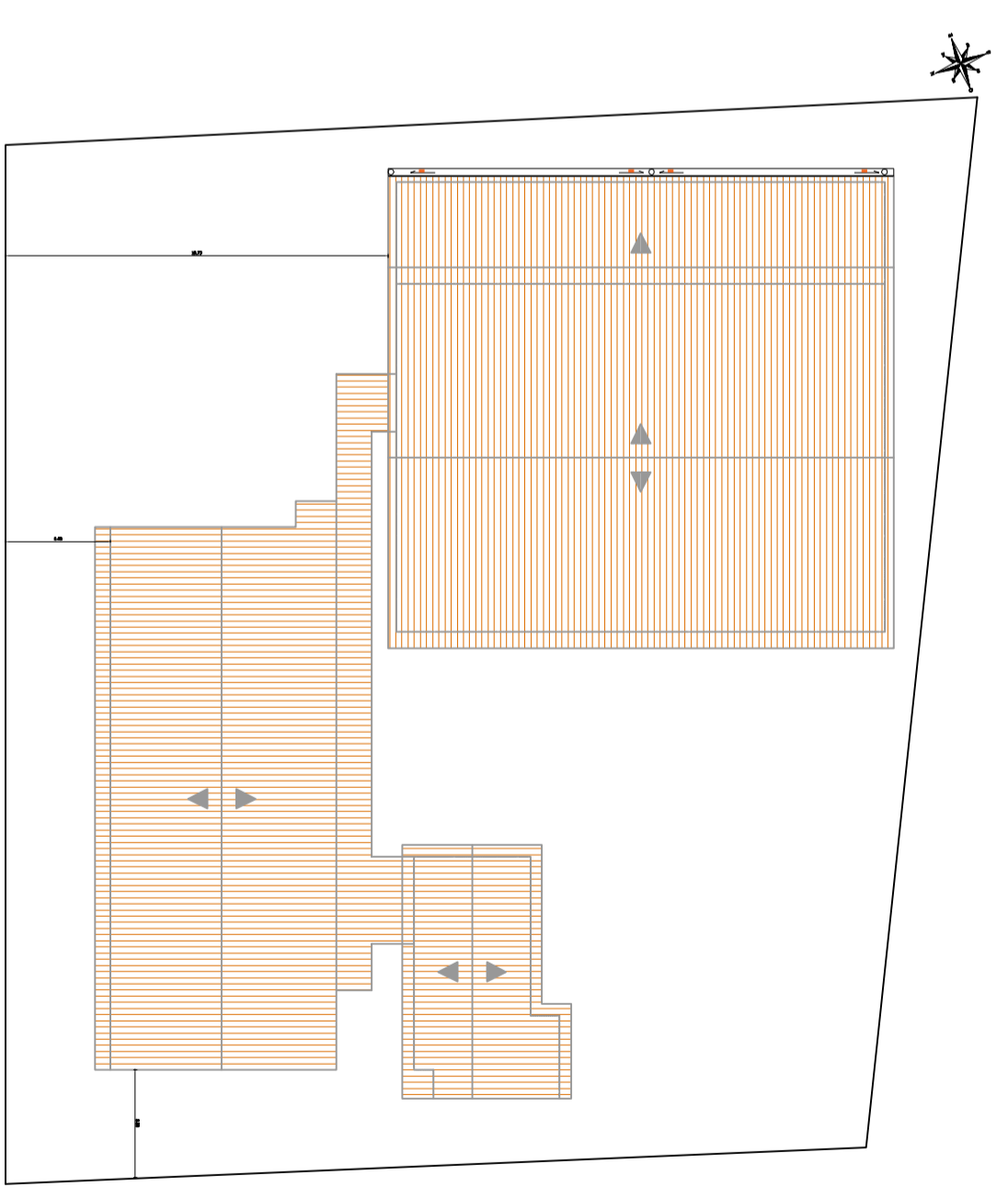


PLANTA DE SITUAÇÃO
ESCALA 1:1000



PLANTA DE LOCALIZAÇÃO
ESCALA 1:250



PROJETO: PROJETO DE REFORMA - EMEI CRISTO EDUCADOR

LOCAL: RUA GENERAL JOÃO MANUEL, 1740

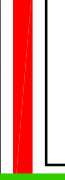
PLANTA: LOCALIZAÇÃO E SITUAÇÃO

PROJETADE: 01

RESPONSÁVEL TÉCNICO: Nilson Lopes Furtim CADU 74299031

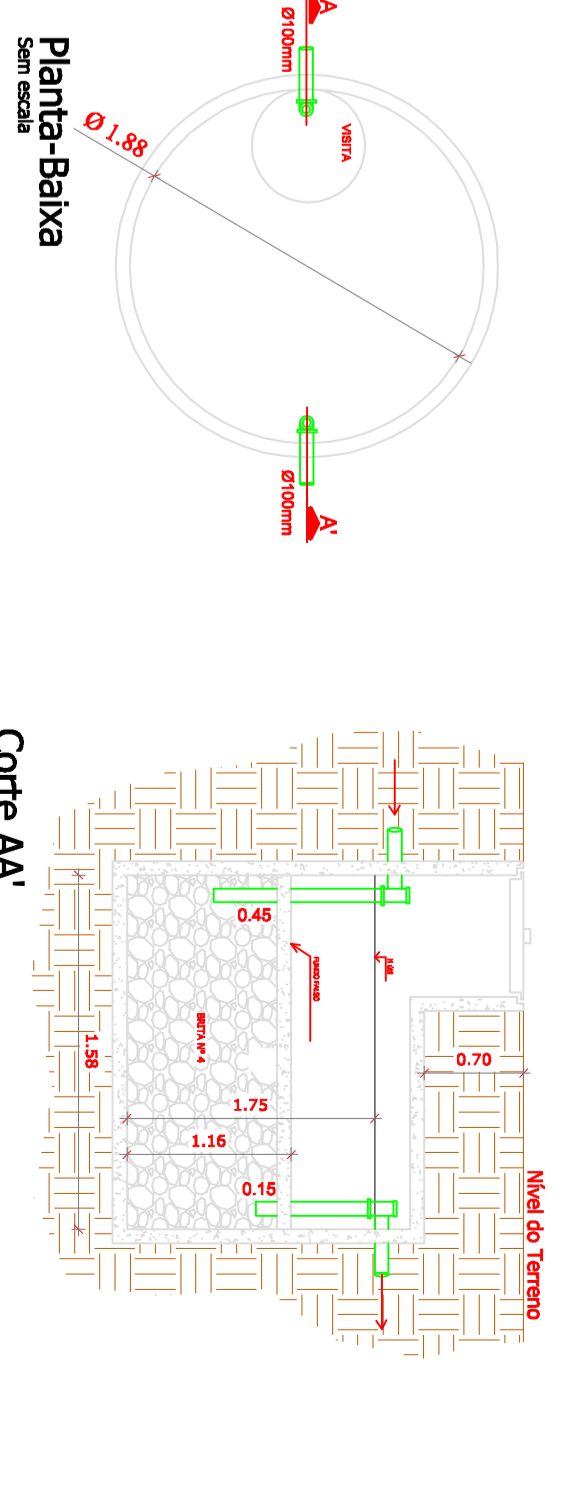
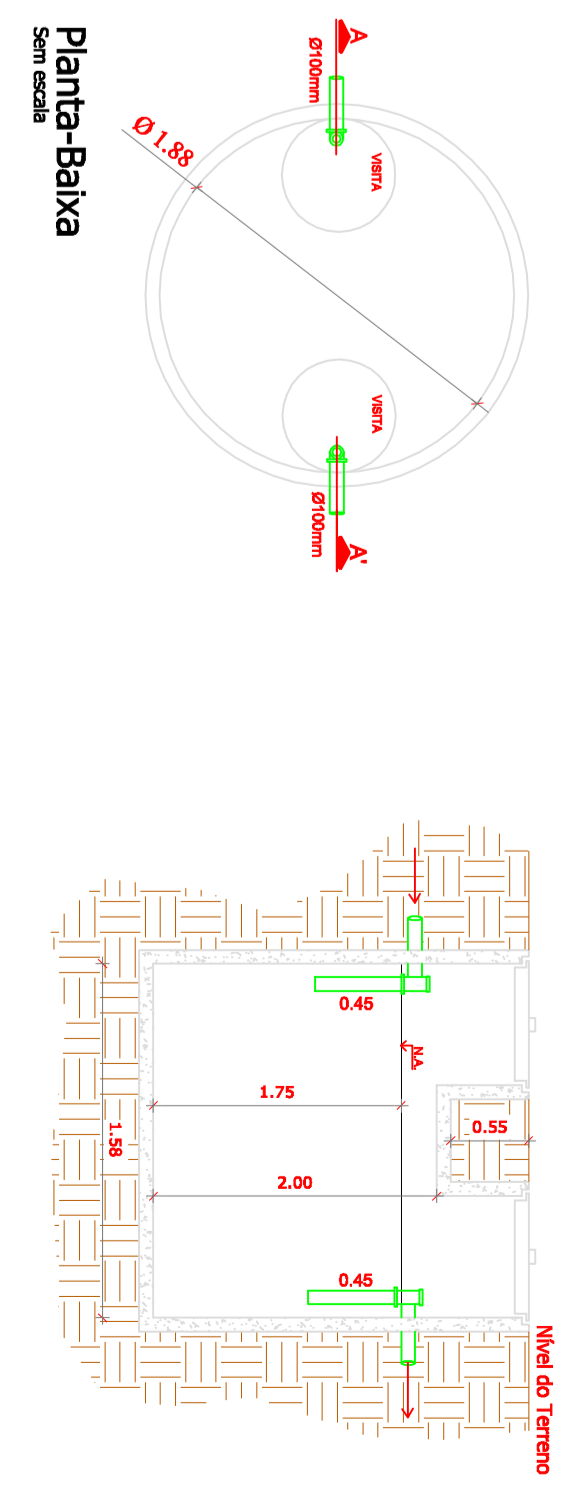
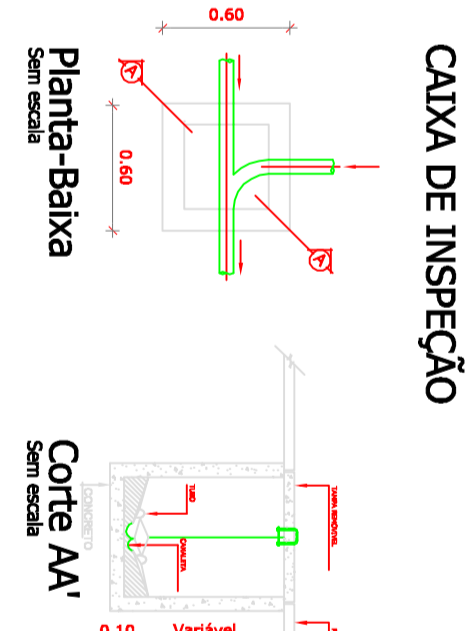
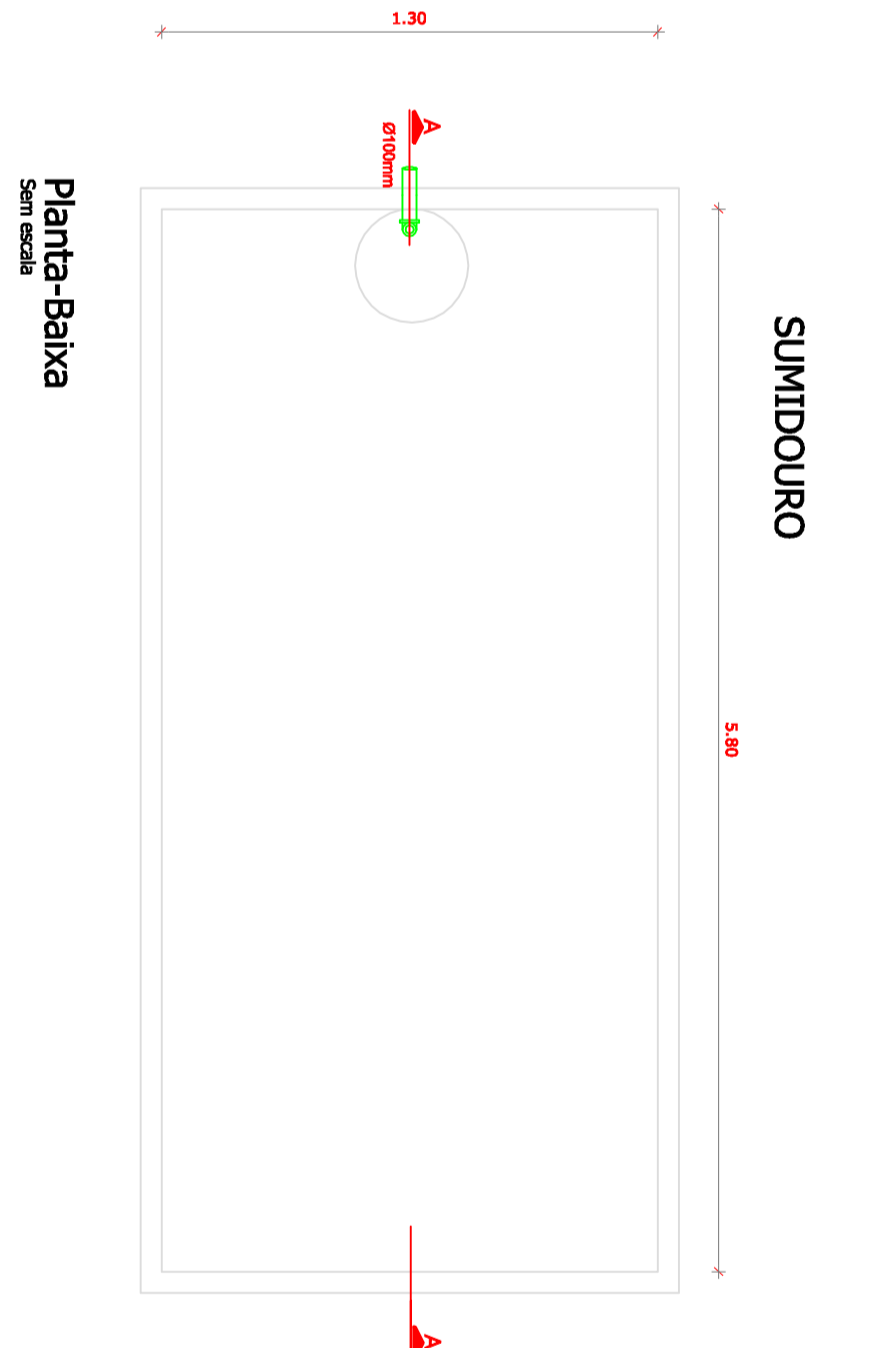
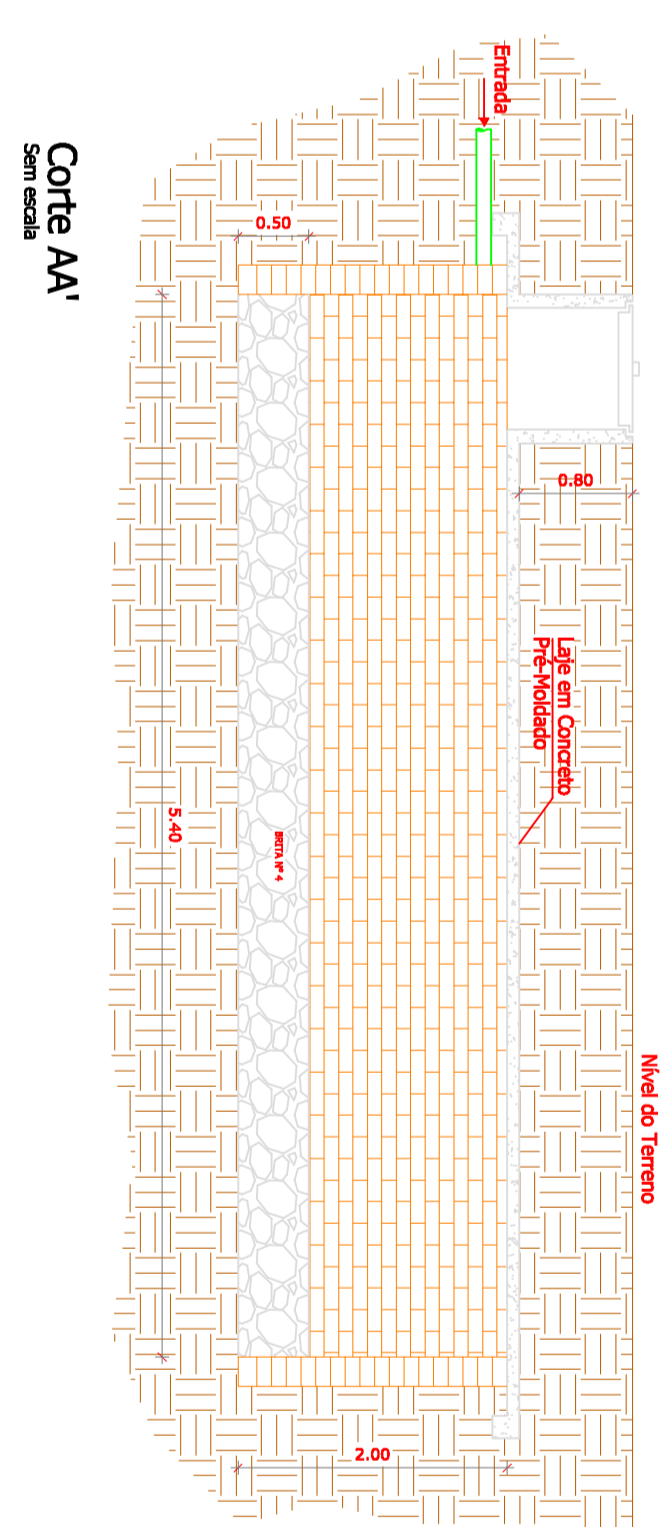
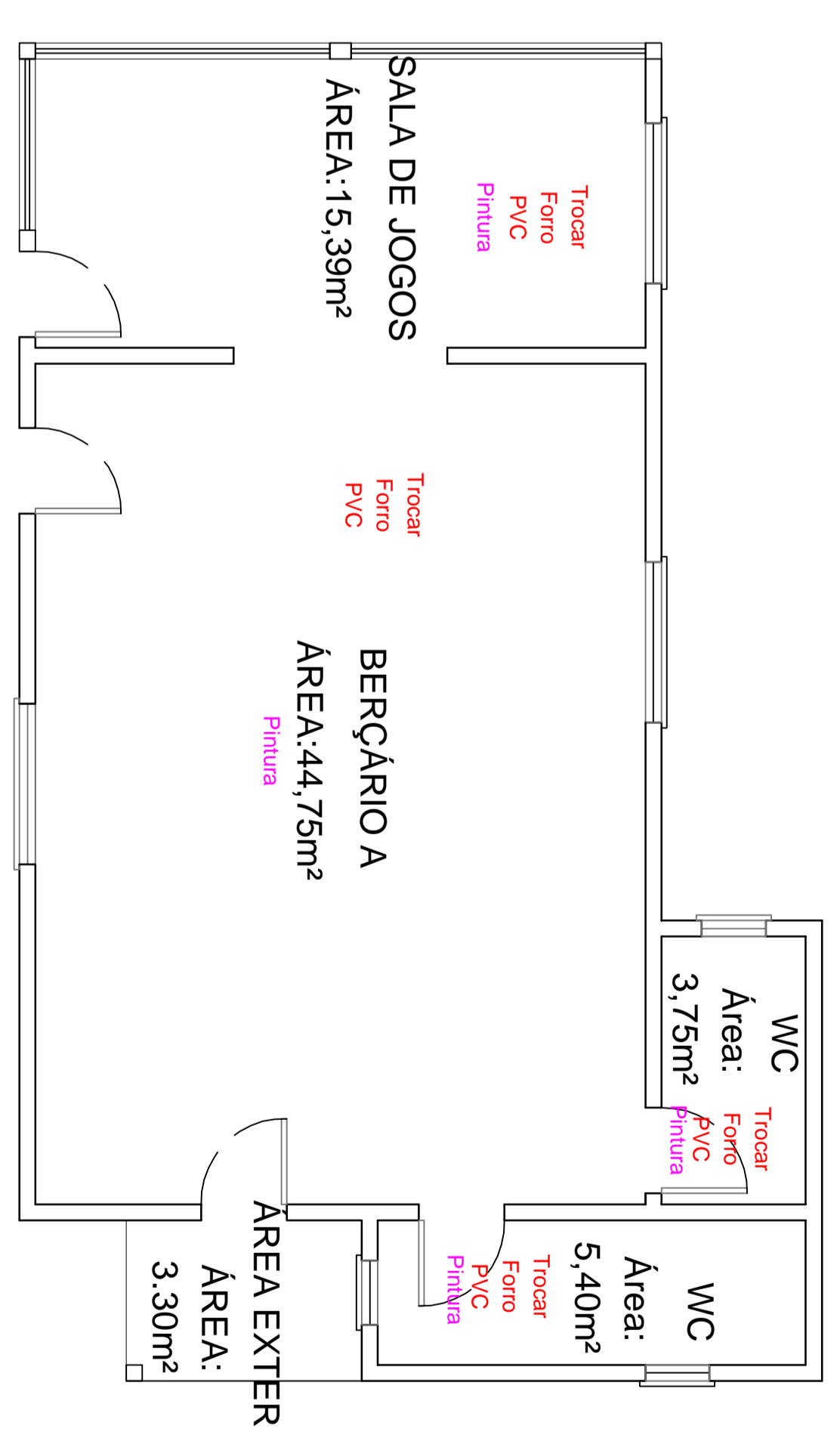
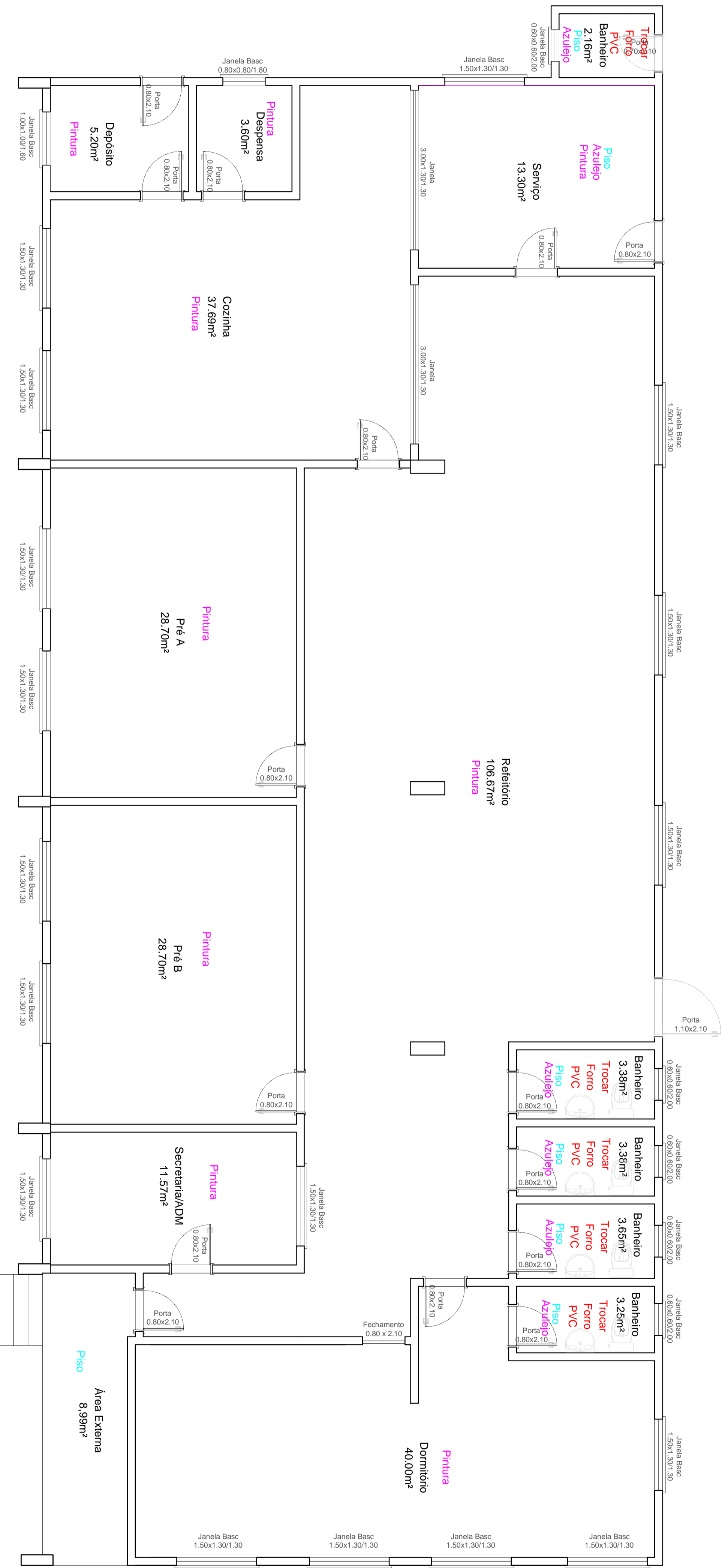
PROPRIETÁRIO: Município de São Vicente do Sul

PROJETADE Nº: 1





GINÁSIO
340,00 m²



PROJETO: REFORMA PARCIAL - EMEI CRISTO EDUCADOR
 LOCAL: RUA GENERAL JOÃO MANUEL, 1740
 PRONOME: PLANTA BAIXA / DETALHES
 DATA: 26/04/2022
 PRONOME: 01
 ESCALA: 1:50
 AREA: 1043,32 m²

RESPONSÁVEL TÉCNICO: TATIAN LOPES FARIAS CAD. 2529031
 PROJETISTA: Município de São Vicente do Sul

PRONOME: 2