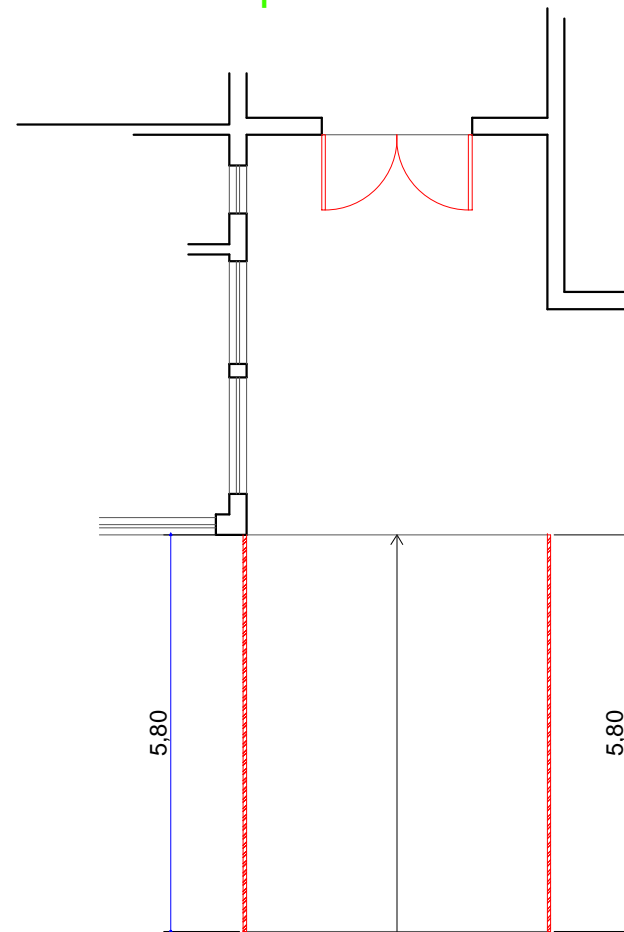
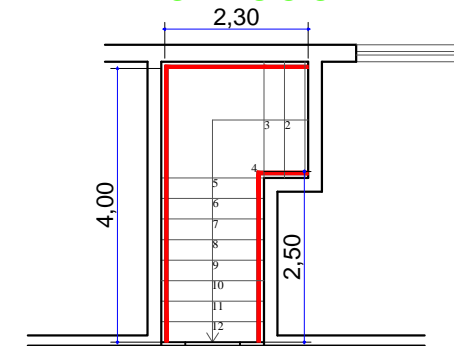


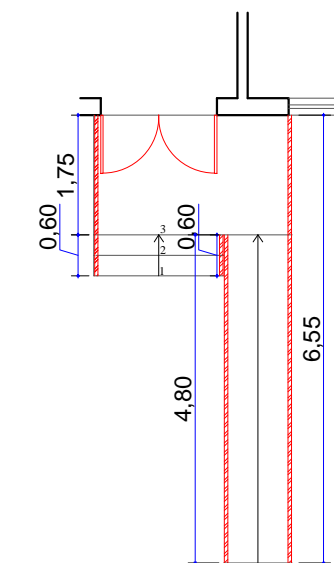
Entrada sala de espera



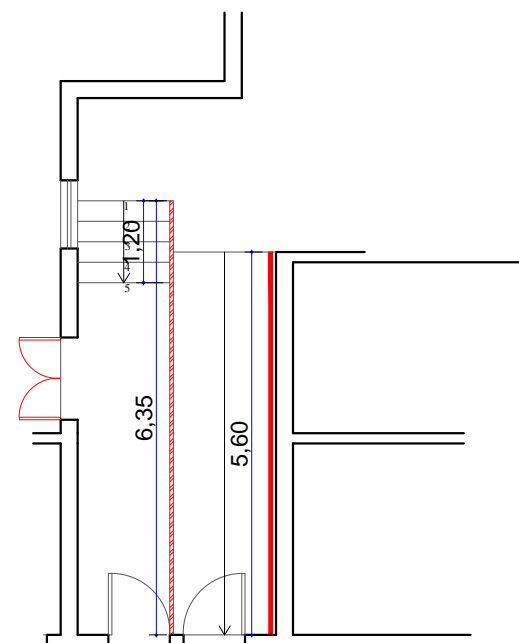
Farmácia



Entrada Principal



Rampa Ala Central



Legenda

- Corrimão
- Guarda-Corpo com corrimão



Prefeitura Municipal
São Vicente do Sul
 2017 - 2020
 Município desenvolvido, cidadão valorizado

PRÉDIO: HOSPITAL MUNICIPAL SÃO VICENTE FERRER		
LOCAL: Rua Antônio Gomes, 386 - CENTRO São Vicente do Sul/RS		
PRANCHA: PPCI	Escala: S/ Escala	ÁREA: -
RESPONSÁVEL TÉCNICO: Andrews Leivicoff CREA/RS 206829		

PRANCHA Nº:
01