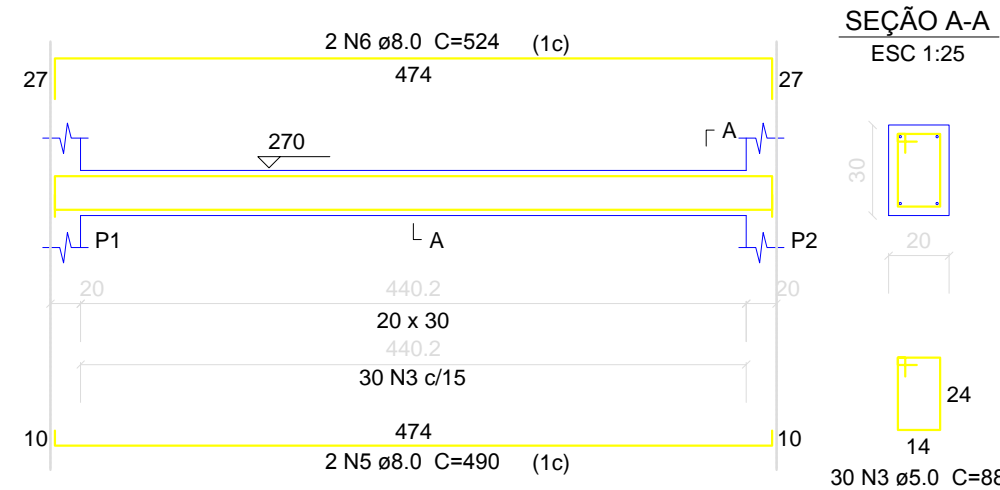


VIGAS SUPERIORES

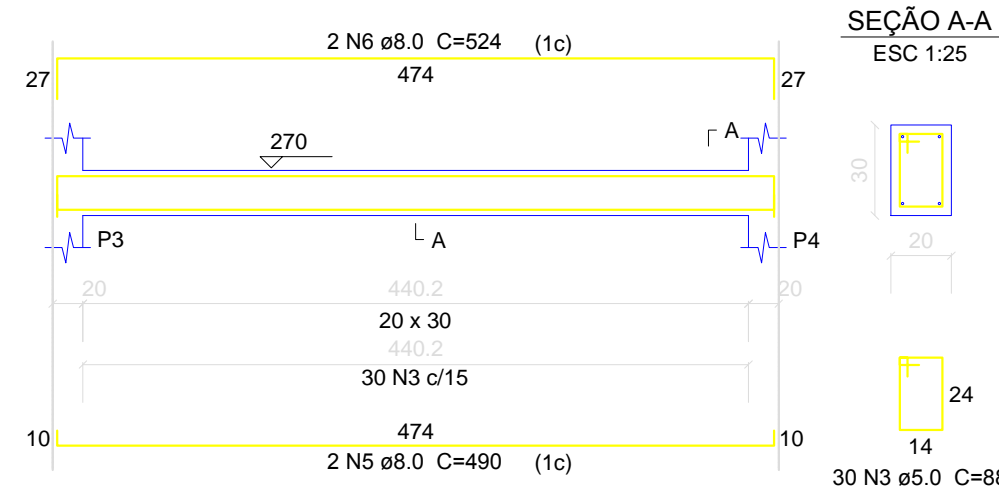
V1

ESC 1:50



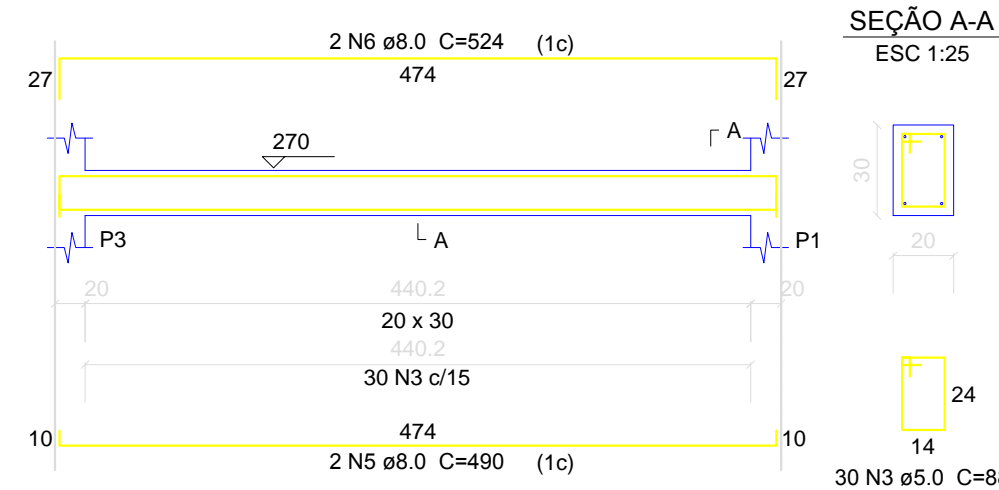
V2

ESC 1:50



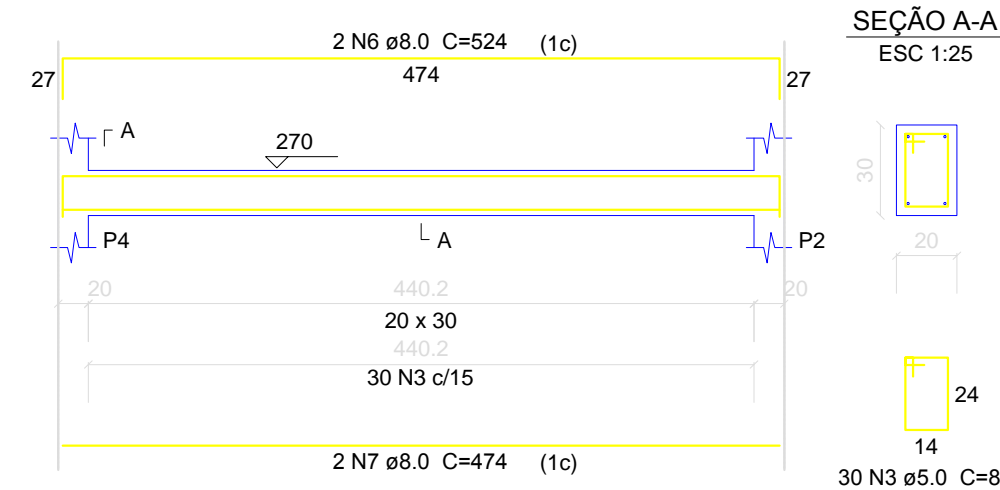
V3

ESC 1:50



V4

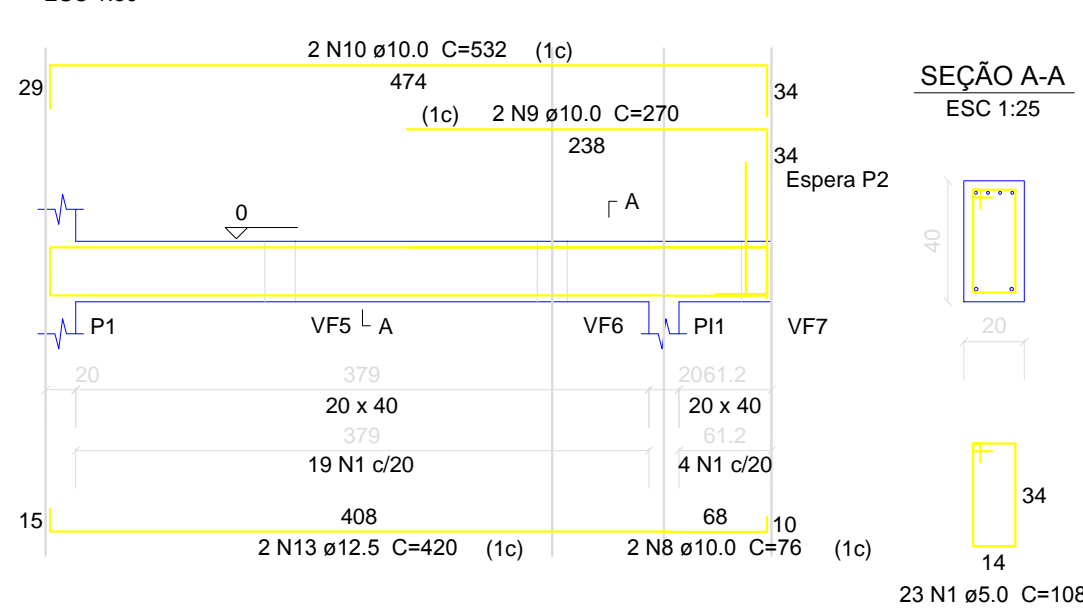
ESC 1:50



VIGAS FUNDAÇÃO

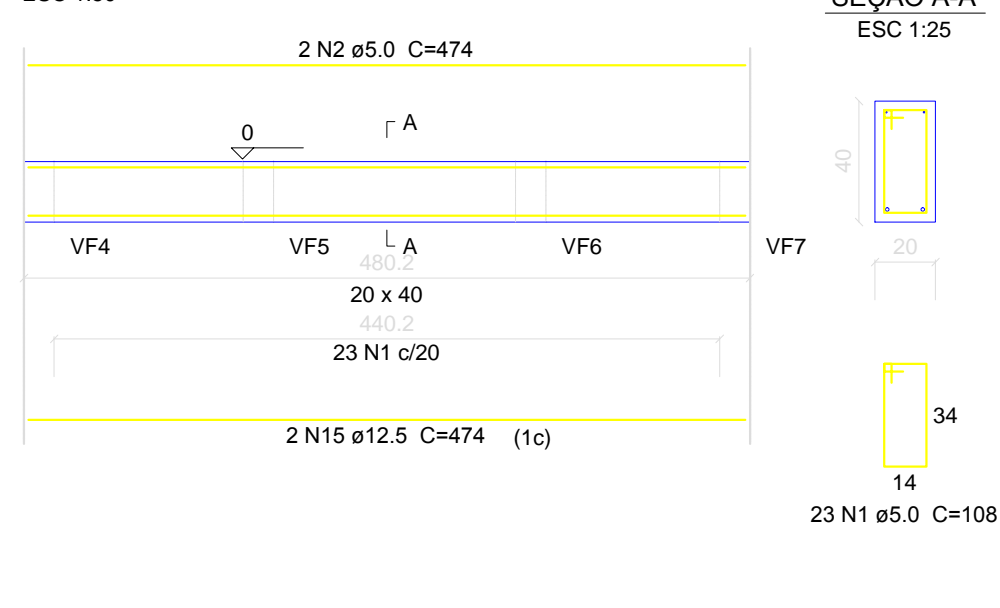
VF1

ESC 1:50



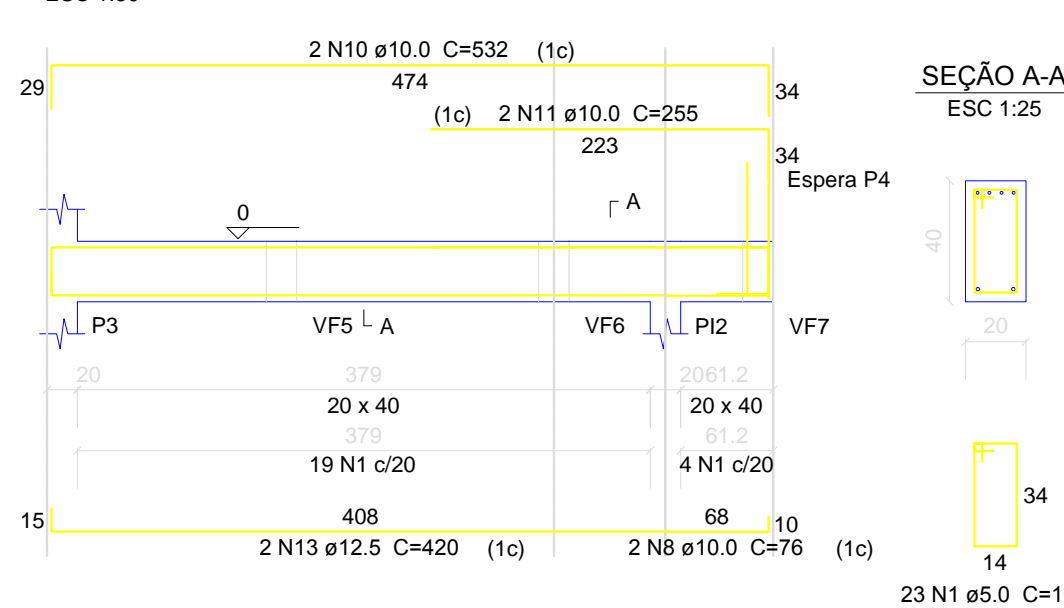
VF2

ESC 1:50



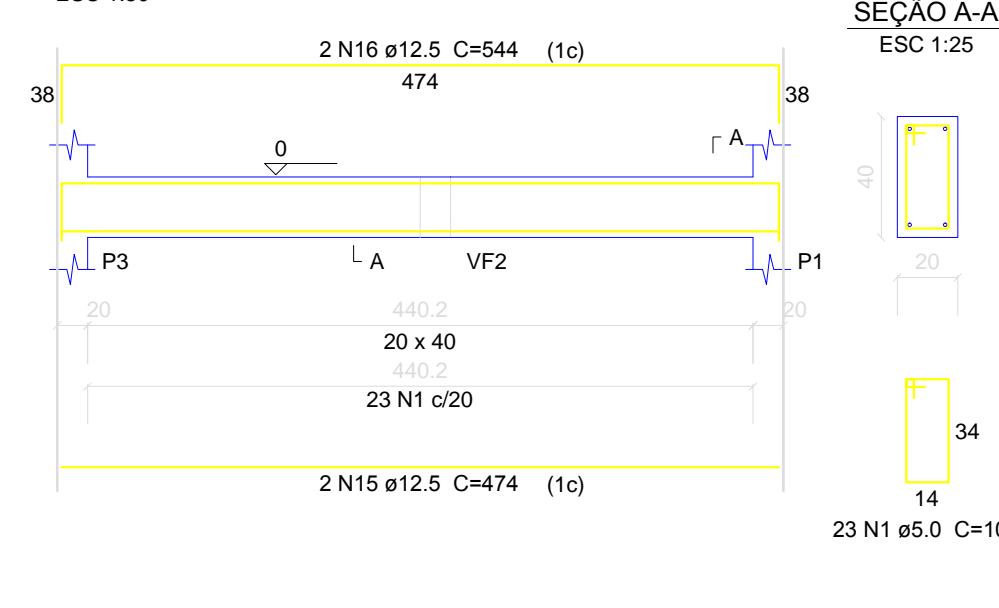
VF3

ESC 1:50



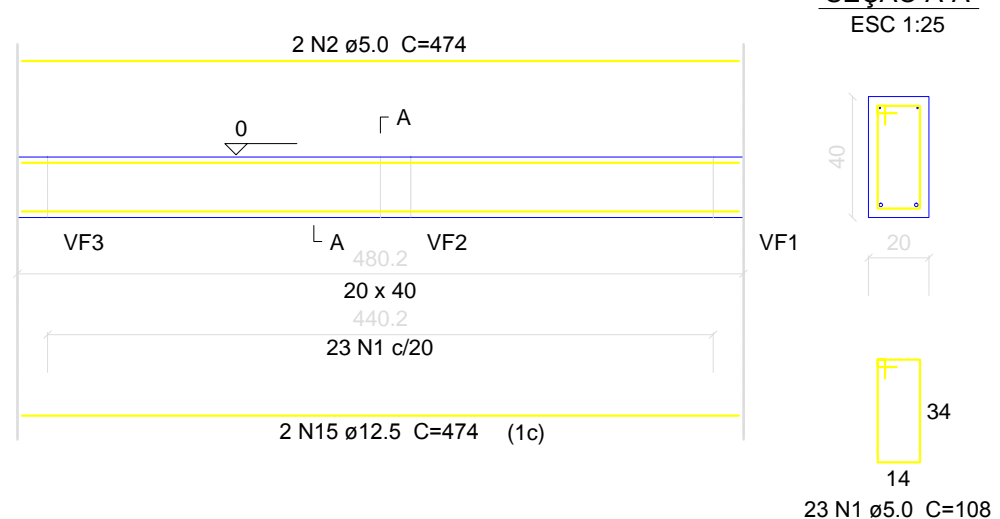
VF4

ESC 1:50



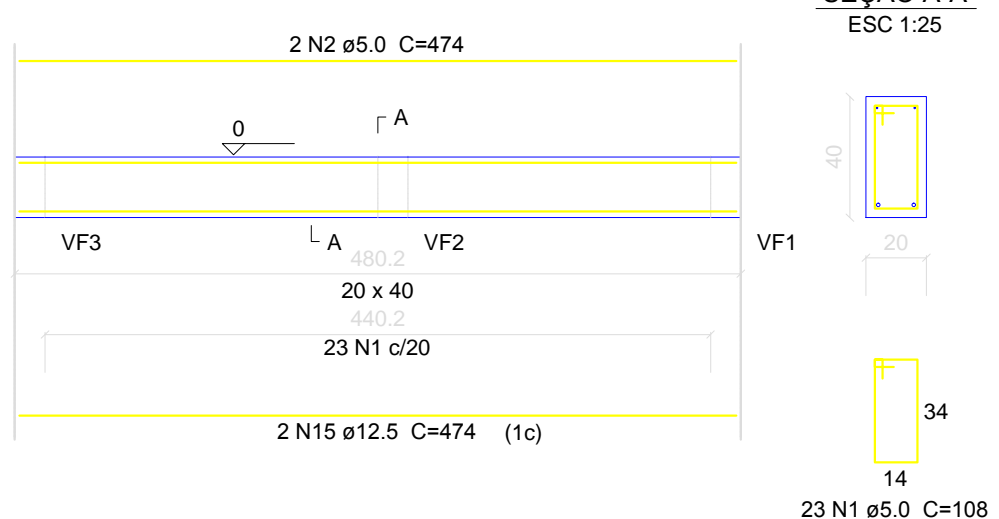
VF5

ESC 1:50



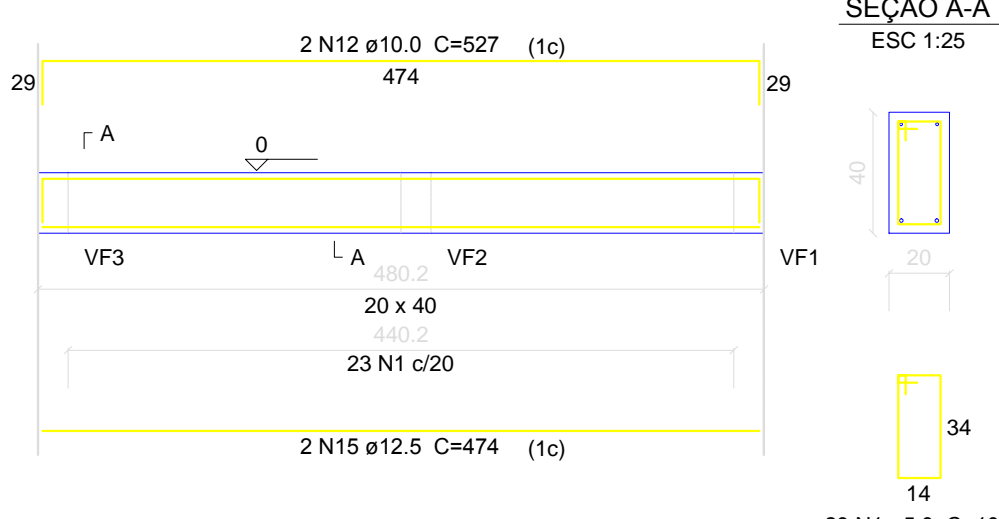
VF6

ESC 1:50



VF7

ESC 1:50



Relação do aço

Fundações:		VF1	VF2		
		VF3	VF4		
		VF5	VF6		
		VF7			
Térreo:		V1	V2		
		V3	V4		
AÇO	N	DIAM (mm)	QUANT (Barras)	UNIT (cm)	C.TOTAL (cm)
CA60	1	5.0	161	108	17388
	2	5.0	6	474	2844
	3	5.0	120	88	10560
CA50	4	6.3	6	68	408
	5	8.0	6	490	2940
	6	8.0	8	524	4192
	7	8.0	2	474	948
	8	10.0	4	76	304
	9	10.0	2	270	540
	10	10.0	4	532	2128
	11	10.0	2	255	510
	12	10.0	2	527	1054
	13	12.5	4	420	1680
	14	12.5	8	104	832
	15	12.5	10	474	4740
	16	12.5	2	544	1088

Resumo do aço

AÇO	DIAM (mm)	C.TOTAL (m)	PESO + 10 % (kg)
CA50	6.3	4.1	1.1
	8.0	80.8	35.1
	10.0	45.4	30.8
	12.5	83.4	88.4
CA60	5.0	308	52.2
PESO TOTAL (kg)			
CA50	155.3		
CA60	52.2		

Volume de concreto (C-25) = 3.84 m³
Área de forma = 48.98 m²



Prefeitura Municipal
São Vicente do Sul
2017 - 2020
Município desenvolvido, cidadão valorizado

PROJETO: IMPLANTAÇÃO E MODERNIZAÇÃO DE INFRAESTRUTURA DO CAMPO DE FUTEBOL			
LOCAL: RUA CONDE DE PORTO ALEGRE, Nº 1950			
PLANTA: ESTRUTURAL		DATA: 06/12/18	
PRANCHA: ARMADURA DOS DAS VIGAS		ESCALA: INDICADA	ÁREA: 11.424m²
RESPONSÁVEL TÉCNICO: Andrews Leivicoff CREA/RS 206829			